

Office of Research

2025

The Year In Review

---

Highlights, accomplishments,  
and activities from the Office of  
Research throughout 2025.



# Leadership Welcome

## Dear Colleagues,

Thank you for taking the time to read through our 2025 Year in Review. As we address new opportunities in 2026, the Office of Research is pleased to share highlights and accomplishments from the Research Mission. A few of these high-level areas included:

- A record in clinical trials revenue, totaling \$37.1 million, a \$2.2 million increase over FY25
- Continued focus on cross-cutting Research Strategic Priorities
- Ongoing key investments in MCW cores, Clinical & Translational research, and much more

As the Office of Research plans for the future, we take pause to thank and commemorate our research teams in the Office of Research and throughout campus. The institutional Research Mission has seen excellent growth and success in 2025. We persist toward the common goal of our commitment to providing the best possible research environment to further the goals of our investigators and leaders to advance research forward.



**Ann B. Nattinger, MD, MPH, MACP**

Vice Dean for Research  
Associate Provost for Research  
Professor of Medicine  
Lady Riders Professor of Breast Cancer  
Research



**Melinda R. Dwinell, PhD**

Associate Dean for Research  
Professor of Physiology and Eminent  
Scholar



**Blair Stauffer-Fetting, CRA**

Assistant Dean,  
Research Operations

# Headlines & Successes

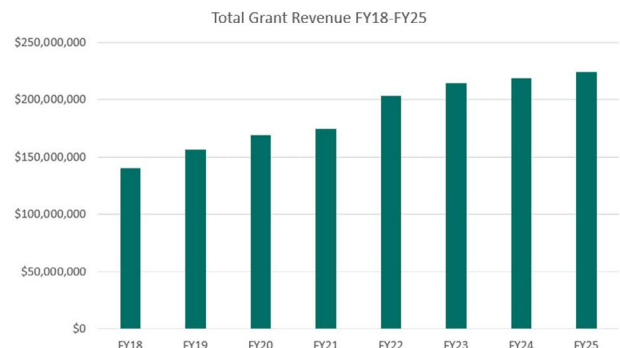
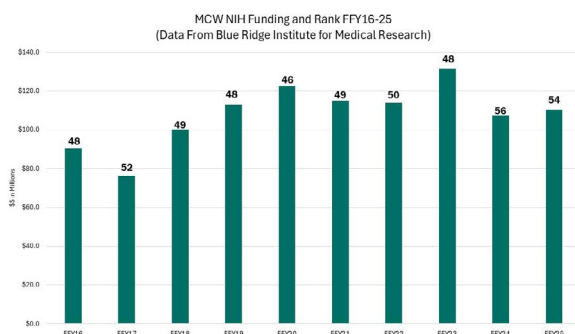
For FY26, the Office of Research is continuing to focus our efforts on the success measures from the 2020-2025 Strategic Framework; however, due to the current federal landscape, it is important for MCW to establish research strategic priorities to guide our decisions and investments in research. Over the past several months, research leaders have been collaborating to create cross-cutting Research Strategic Priorities - building upon and extending the successes of the 2020 - 2025 Research Strategic Plan. These Priorities encompass four essential areas:

- New Approach Methodologies and Non-Animal Models
- Therapeutics, Drug Discovery, and Commercialization
- Clinical & Translational Research
- Informatics & Modeling

These Priorities were shared with Research Council for input and strongly endorsed and will function as an interim strategy while we anticipate the development of a new Research Strategic Plan in 2027.

With the transition of the presidential administration in January 2025, the research mission had to respond to frequently updated information and Executive Orders that impacted federal awards, grant reviews, travel, and cross-mission concerns around education and training. Along with the MCW Executive Action Response Team, the Office of Research published ongoing guidance and information to keep up with the rapidly changing landscape. The Office also held multiple in person Research Town Halls to answer direct questions from the MCW research community and provide more clarity to complex federal guidelines.

One of the most challenging impacts to navigate was the termination of multiple previously awarded grants coupled with the significant delays in the awarding of new grants. This was particularly difficult for the investigators who were directly impacted by terminations or delays. In response, the Office of Research stood up an expansion of the Bridge Funding Program to support and maintain affected research labs and ensure continuity of the science. The Expanded Bridge offers two mechanisms: Delayed Funding Awards, which provide short-term, renewable awards for investigators who receive fundable scores but experience significant lag time in actual awards, and Project Pivot Awards, which provide interim support to an investigator who has had their award terminated in order to pivot their work to be more competitive. The Office of Research awarded 9 awards (6 Pivot, 3 Delayed) with a total disbursement of \$430K in 2025.



MCW investigators were awarded a total of \$110.3M in NIH awards during federal fiscal year 2025 (October 1, 2024 - September 30, 2025), up from \$107.5M in FFY24 (left). This landed the institution at a ranking of #54 in NIH funding among 145 schools of medicine as ranked by the Blue Ridge Institute for Medical Research. The MCW Research mission received \$225M in total grant revenue in FY25 (right). This total includes NIH awards, alongside other funding sources.

# Headlines & Successes

The Office of Research hosted “Research Day” on March 27, 2025. The annual event is designated to inspire new knowledge, boost collaboration, and spark discovery with a variety of programming for researchers at all levels. The day included:



*Clinical Research Champion:* **Mariah Heller**, Clinical Research Coordinator II



*Laboratory Leader:* **Alexander Armstrong**, Research Technologist II



*Core Contributor:* **John Reho, PhD**, Research Scientist II



*Administrative Agent:* **Valerie Salato, MS**, Grants Operations Coordinator Sr.

• The **Research Day Kickoff & Inaugural Research Staff Awards Program Celebration**. Dr. Ann Nattinger welcomed everyone to Research Day and highlighted the importance of celebrating research during unprecedented times. Dr. Nattinger, alongside Dr. Deborah Costakos, Interim Dean of the School of Medicine, also recognized the winners of the inaugural Research Staff Awards Program. The new award program highlights research staff who go above and beyond in recognizable ways and truly make a difference to the research mission. This new award program accepts peer nominations, review and make selections with a broadly representative committee. One award is given in each of four categories: Clinical Research Champion, Laboratory Leader, Core Contributor, and Administrative Agent.

• A **Research Support & Resource Expo**. The open-house style event brought together various parts of the research spectrum and introduced attendees to information about their programs and services in the research mission.

• The **Society for Research Excellence Keynote talk** by Dr. Cheryl Stucky titled, “No Pain No Gain: A Healthy Career in Pain Research” highlighted key elements of her career progression, including 3 scientific achievements.

• **Research Day poster sessions** included 161 MCW faculty, staff, and student scientists. Presenters had the opportunity for their posters to be reviewed for prizes in each category as judged by other MCW scientists. Congratulations to all!

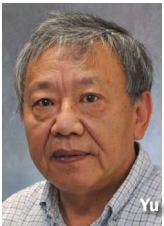


# Headlines & Successes



The Society for Research Excellence inducted **Amanda Brandow, DO** (Pediatrics) and **Terri deRoos-Cassini, PhD, MS** (Surgery) as new members for the 2025-

2026 academic year. These individuals are characterized by their sustained research leadership leading to high impact discoveries or findings, a history of serving as an effective mentor for trainees and junior faculty, and national recognition for research, such as high visibility publications, national or international leadership roles, and receipt of awards.



In July, **Hongwei Yu, MD** (Anesthesiology) and **Quinn Hogan, MD** (Anesthesiology) [received notice](#) of the issuance of their U.S. patent titled, “Calcium Channel 3.2

Inhibitory Peptides and Uses Thereof”. This patent covers their novel therapeutic for blocking pain with novel peptides delivered into anatomically selected peripheral sensory neurons via a gene therapy vector. The Office of Technology Development (OTD) is seeking licensees for this exciting opportunity.

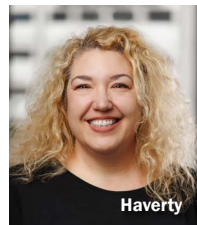
The **Outstanding Committee Service Awards** is an annual recognition program initiated by the Office of Research to acknowledge the exemplary contributions of faculty, staff and community members who serve as dedicated members of established research committees at MCW. Recipients were nominated by their respective committee chairs. In appreciation of their service contributions to research at MCW, recipients received a recognition pin and certificate signed by Ann B. Nattinger, MD, MPH, Vice Dean for Research. Recipients must have been established committee members for greater than one year, in good standing, with notable contributions to committee efforts to support the research community. [View the 2025 award recipients.](#)



The Research Affairs Committee awarded 5 seed funding grants in the spring and fall cycles under the New Faculty Pilot Grant through MCW’s Institutional Research Grant mechanism. This opportunity helps provide new MCW faculty members acquire preliminary data to pursue larger extramural funding. It is an important program for developing



the research programs of junior faculty. Each faculty member was awarded up to \$35,000 to develop their projects. These projects were led by **Samuel Bobholz, PhD** (Radiology), **Rachel Lenhart, MD, PhD** (Orthopaedic Surgery), **Matthew Surdel, PhD** (Medicine), **Fumou Sun, PhD** (Medicine) and **Yaqiang Wang, PhD** (Biophysics).



**April Haverty, MPE, JD**, Director of the Grants and Contracts Office (GCO), was selected as a recipient of the 2025 Distinguished Service Award, the institution’s highest faculty and staff honor. In her director role, Haverty interacts with virtually every MCW department, institute, center, and central group – as well as with key stakeholders at Froedtert Hospital, Children’s Wisconsin, the Clement J. Zablocki Veterans’ Administration Medical Center and other collaborating institutions. The longevity of April tenure at MCW is a testament to her commitment to the success and growth of MCW’s research mission. Most recently, April’s extensive skills have benefited MCW through her role on the Executive Action Response Team and as chair of its Research, Contracts, and Grants Subcommittee. She has worked to identify MCW awards at-risk, identified strategies being used elsewhere to deal with changing federal award processes, and been agile in making improvements in our processes at MCW. Additionally, she has interfaced with federal program officials and grants management staff to determine the best ways to move forward and has developed and provided empathetic guidance to PI’s with terminated awards, including graduate students.

# Headlines & Successes



In April, **Andrew Nencka, PhD** (Radiology, Biophysics, and Biomedical Engineering) was appointed Director of the Center for Imaging Research (CIR). As Director of the CIR, Dr. Nencka oversees the operations of the highly specialized center that facilitates multi-disciplinary collaboration among imaging scientists and clinicians. The CIR manages MCW-operated research magnetic resonance imaging facilities, connects MCW researchers with imaging specialists, and hosts a robust imaging informatics infrastructure that spans imaging modalities. The CIR has a distinguished history in uniting basic and clinical scientists of various disciplines to further the development and application of medical imaging technology. In this role, Dr. Nencka leads the CIR in advancing cutting edge imaging technology and science with over 45 labs which it currently supports.



In December, **Julie K. Freed, MD, PhD** (Anesthesiology) was appointed Senior Associate Dean and Director of the Clinical & Translational Science Institute (CTSI) of Southeast Wisconsin. Dr. Freed is a practicing cardiac anesthesiologist at Froedtert Hospital and manages her NIH-funded laboratory within the CVRC. Beyond her clinical and research roles, Dr. Freed holds numerous additional leadership positions both within and outside of MCW. These include serving as Chair of the Cardiovascular Section within the American Physiological Society, elected member of the American Heart Association Women's Leadership Committee, member of the MCW Tissue Bank executive committee, and standing member of the Therapeutic Development and Preclinical Studies scientific review panel through the Division of Clinical and Translational Sciences at the National Institutes of Health. A strong advocate for the future generation of scientists, Dr. Freed is the Director of the National Institute of General Medical Sciences Training Grant (NIGMS T32) program at MCW and the Founding Director of the Clinical Mentoring Board (CiMB), an institution-wide initiative to develop effective mentoring teams for junior investigators in clinical departments. She has received prestigious accolades such as MCW's Rising Pioneer Award, the Froedtert Hospital President's Award for Translational Research and MCW's Mentor of the Year Award. Dr. Freed is also a current fellow of the National Academy of Medicine.



As a division of the Office of Research, the AWSM Center: Advancing Leadership in Science and Medicine underwent a relaunch in 2025. Now, the AWSM Center: Anything but Ordinary, houses three spheres of focus: Restorative Systems, Professional Development, and People-Centered Research. The vision of the AWSM Center is an extraordinary community where every individual is seen, heard, celebrated and inspired to authentic excellence within a culture of belonging, courageous advocacy, and trust. Their mission is to create structures of belonging at MCW through fierce advocacy for all voices, values-driven professional development, and people-focused research that promotes connection, inclusion, and justice.



The Center for International Blood and Marrow Transplant Research moved into the new Center for Cancer Discovery in the fall of 2025. The CIBMTR is a collaborative resource of data and experts supporting research in cellular therapies to improve patient outcomes. Formerly located in Froedtert Hospital's Cancer Center, the center is anchored in the CCD as an important data resource. Learn more about the center in the [CIBMTR 2025 Annual Report](#).

# Headlines & Successes

The Office of Research is pleased to share that more than \$500,000 in funding was awarded in the 2025 cycle of the Institutional Core Equipment RFA. This opportunity provides the ability to enhance the functionality of equipment for eligible institutional cores and shared resources, which are used by investigators across a variety of disciplines and are open to all campus researchers. These awards illustrate the importance

of investing in our cores and shared resources, allowing teams to continue cutting-edge research at MCW. The funded projects include “Dual-energy X-ray Absorptiometry (DXA) led by **Justin Grobe, PhD**



(Physiology & Biomedical Engineering) and **John Reho, PhD** (Physiology) in the Comprehensive Rodent Metabolic Phenotyping Core; “Speckle Illumination Acquisition (SILA) Optical Sectioning Package” led by **Michael Widlansky, MD, MPH** (Medicine) in the CVRC

Confocal Core; “Affiniti CVx Ultrasound” led by **Divyanshu Mohananey, MD** (Medicine) and **Noelle Garster, MD** (Medicine) in the Echocardiography Core; “Ultracold Freezer Storage -150C and -80C plus wireless temperature monitoring” led by **Steven Kroft, MD** (Pathology) and **Mary Rau** in the MCW Tissue Bank; and “Micropoint 4 and silicon objective, accessories for existing confocal microscopes” led by **Ashish Gadicherla, PhD** (Cell Biology, Neurobiology and Anatomy) in the Oxford Instruments Center for Advanced Microscopy (OxCam).



The annual Cores Fair took place in April. The day was filled with opportunities for MCW Cores and Shared Resources to share projects, for participants to ask questions, and for all to make new connections. Attendees also learned about the trailblazing technologies and shared resources from scientific experts on MCW campus through tables and live demonstrations. A subsequent vendor fair was also held.



# Making Research Better



In early 2026, MCW transitioned human resources, payroll and financials systems into Workday. Leading up to the launch, **several facets of research were integrated into the new system**, with much of the work being done in 2025.

The Research Systems team updated the Payments system and instituted several new procedures to prepare for Workday integration. iLab Core Management Software, which is utilized for the purposes of internal billing and collections for cores and shared resources, billing and collection of IRB Review Fees and Radiation Safety Badges/Rings, as well as the full request and tracking process for OnCore calendar builds, was also integrated into Workday.

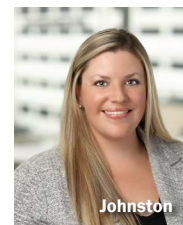
The Office of Research engaged PEER Consultants to **conduct an external review** of the MCW IRB Reliance Program and Institutional Biosafety Committee Program in late 2025. PEER previously conducted a review of the HRPP in 2024, and returned to provide recommendations for enhancements and efficiencies to these HRPP-adjacent programs. PEER interviewed and met with over 50 stakeholders, including faculty and staff across MCW and our clinical partners.

In conjunction with the Clinical & Translational Science Institute (CTSI), the Office of Research has continuously offered the **External Review Program** since 2017. The Program offers full-NIH style grant reviews of applications for R01 and K-Level grants by an external to MCW reviewer prior to submission, helping to improve the quality and competitiveness of the application. The reviewers are also compensated with a \$750 stipend through the Office of Research. In CY25, the program assisted 8 investigators in completion of an external review.

The MCW Libraries **secured access to two new research tools**: Pivot and Embase AI. Pivot aggregates funding data from federal agencies, private foundations, and international sponsors, covering research, travel, fellowships, and training, with weekly funding alerts and collaborator searches based on your research profile. Embase AI complements PubMed for biomedical literature searches, indexing 3,516 journals unique to its coverage plus 98% of MEDLINE journals, providing broader journal coverage than PubMed alone. Both are available on the library website.

The Institutional Biosafety Committee **developed a new standard** which indicates Principal Investigators may choose to maintain a single IBC Application for clinical studies involving the same investigational product if the studies have similar safety concerns and risk mitigation strategies. This reduces the administrative burden of maintaining separate IBC applications when multiple IRB-approved projects use the same investigational product.

The Office of Research **developed several research faculty offboarding tools** to support the transition of faculty pivoting to new roles, including the Research Data Offboarding Survey to help faculty outline plans for their MCW research data under the guidance of the new Research Data and Materials Ownership, Stewardship, and Management policy. Additional tools and resources include the Research Faculty Offboarding Survey, Offboarding Checklist for Departing Research Faculty, Laboratory Decommissioning Checklist, and Status Change Information describing the different faculty employment/appointment options and what they mean relevant to carrying out research.

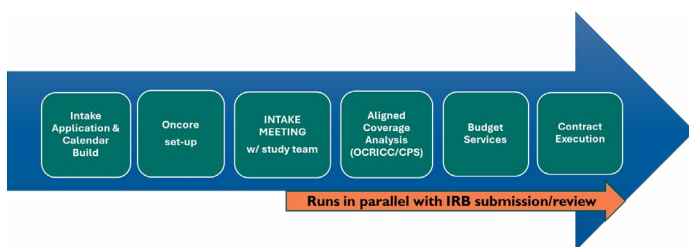


Over the summer, the Grants & Contracts Office **transitioned to a two-team model** to enhance service and communication, with each team being led by a GCO Grants Supervisor to serve as the primary contact for the team. The teams are led by **Chelsea Hamilton** and **Ranelle Johnston**, both of whom have several years of experience with GCO.

# Making Research Better

The eBridge Funding Proposal module was **modified to streamline the initiation of new subawards**. Users upload the Statement of Work (SOW) and Detailed Budget during award reconciliation if a subaward is included, and these documents are used by GCO to draft the initial subaward upon FP activation.

In 2025, the Office of Research, in partnership with Froedtert Health OCRICC and CPS, continued to scale the REFORM (Research Financial Optimization & Risk Management) model **to strengthen clinical trial activation across the enterprise**. Designed to make activation more predictable, REFORM centralizes complex financial start-up activities, including feasibility review, coverage analysis, billing grid development, and budget negotiation. This year, REFORM expanded its impact through increased adoption, supporting a growing number of protocols while further aligning study teams and institutional partners. By introducing a standardized, parallelized workflow, REFORM has reduced rework, enhanced financial compliance, and improved transparency across the activation process. Key advancements include earlier engagement through centralized intake, improved document accessibility via Florence eBinders, and the development of metrics to track activation timelines and outcomes. Together, these efforts are helping to shorten time to activation, protect study team bandwidth, and ensure more consistent, high-quality study start-up. As REFORM continues to evolve, its focus remains on delivering efficient, compliant, and scalable processes that support investigators and study teams, ultimately accelerating trial activation and advancing research.



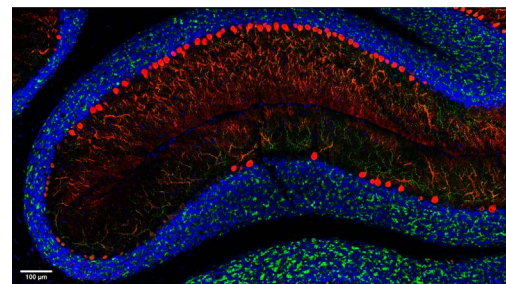
During 2025, 3 established cores, BIAcore, the Biomolecular NMR Facility and the CBNA Aquatics Facility joined iLab to **manage service workflows and automate revenue collection**. In addition, the Cardiovascular iPSC Core reorganized and restructured to provide new services.



**Campus partners are collaborating to establish core groups with aligned technologies and services.**

The Microscopy group spearheaded by **Jonathan Marchant, PhD** (Cell Biology, Neurobiology & Anatomy) is well established and a Versiti led bioinformatics group has been successfully formed. The MCW-initiated Histology and Biobanking group is preparing for their inaugural meeting scheduled in early 2026. These groups will work together to share updates and best practices, increase efficiencies and reduce duplicate services.

The Office of Research [published a refreshed webpage dedicated to MCW Cores](#). The page highlights the various categories of cores and shared resources available to researchers, along with a short description of each core or shared resource and contact information. The MCW Research Cores and Shared Resources provide research services using advanced instruments and technologies that would otherwise not be available to our faculty.



*Mouse Cerebellum*, Sagittal cryosection from mouse cerebellum labeled with immunohistochemistry. Calbindin-positive Purkinje neuron cells are shown (red) with VGLUT2-positive glutamatergic synaptic inputs (green) and DAPI-positive (blue) granule cell layer. **Cesar Martinez** (MD/PhD student) and **Cecilia Hillard, PhD**.

# Our People



In August, **Melinda Dwinell, PhD**, Professor of Physiology and Eminent Scholar, was named Associate Dean for Research. With her extensive experience in laboratory and animal research, genomics, complex data, large programmatic grants, resource development, translational

capabilities and institutional program development, Dr. Dwinell will facilitate growth and development of research at MCW as Associate Dean for Research. Reporting to Dr. Ann B. Nattinger, Vice Dean for Research, she will provide leadership to the Office of Research. She will work closely with Dr. Nattinger and Blair Stauffer-Fetting, CRA, Assistant Dean for Research Operations, to engage on strategic matters, particularly those related to laboratory research, to ensure faculty are well positioned to pursue their scientific goals. Specifically, she will support the planning and development of research infrastructure including cores and shared services, coordinate strategies for maximizing success with external research funding, and identify opportunities for enhancements, efficiencies, and collaborations across the research mission.



In July, the Biomedical Resource Center (BRC) welcomed **Abigail Michelson, DVM** as Staff Veterinarian. Dr. Michelson also has a faculty appointment in the department of Physiology. As a researcher, Dr. Michelson's scientific interest center on *Corynebacterium bovis* (Cb),

particularly Cb in immunocompromised research mice. Dr. Michelson is also a passionate educator and hands-on teacher. Beyond leading seminars and demonstrations, she has also developed educational references, standard operating procedures, and pre-approved techniques, and enjoys engaging with researchers and animal care staff in the developmental stages of their projects and careers. As Staff Veterinarian, Dr. Michelson will support the design, implementation, and ongoing evaluation of programs for veterinary medical care, animal husbandry, and animal facility maintenance. She will also lead and manage animal husbandry and veterinary technical personnel and work closely with faculty, research staff, and the MCW IACUC to ensure the highest quality operation in the BRC.



The Office of Research welcomed **Blair Stauffer-Fetting, CRA**, as Assistant Dean, Research Operations in March. She joined MCW in 2016 as Department Administrator of Pharmacology & Toxicology and Center Administrator for the Neuroscience Research Center.

She joined the Comprehensive Injury Center as Center Administrator in 2020. Blair's appointment recognizes her excellence in research administration, her expanding partnerships within MCW and essential role as an advisor in the research mission. As Assistant Dean for Research Operations, she will guide the strategic growth, vision, and operations for the Office of Research in a dyad partnership with the Vice Dean and Associate Provost for Research, and in partnership with the nine unit leaders in the Office of Research. Blair will also partner with senior research leadership, affiliate institutions, other mission leaders, regional campuses, and local thought leaders to identify opportunities for growth, develop and lead key initiatives, and inform mission-wide strategic efforts and future planning.



In May, **Erika Krueger** assumed leadership of the Research Systems unit as Director, Research Applications. Previously, Erika served as the Research Systems Manager, Development, and led the technical team that supports, maintains, and enhances eBridge, our research

administration system. She works closely with internal stakeholders and external vendors to partner on strategic planning and project development to ensure the efficiency and reliability of eBridge, and to create new enhancements and customizations that improve the user experience. Most recently, Erika has been leading efforts to prepare for the Workday transition as it impacts MCW research applications. Erika has been a part of the eBridge development team since she joined MCW in 2010, and also has experience in software engineering and other application development. With over 26 years of experience in Information Technology, Erika brings a wealth of technical knowledge and hands-on skills. The Research Systems unit manages and maintains eBridge, as well as our clinical trials management software, OnCore, and the Payments system for study participants. The unit also includes training and help desk support.

# Our People



**Kristin Busse, PharmD, BCPS,** sat and passed the Regulatory Affairs Certification (RAC-Drugs) exam from the Regulatory Affairs Professional Society (RAPS). RAC is the premier credential for regulatory professionals in healthcare. There are two RAC designations: RACDrugs

for pharmaceuticals and RACDevices for medical devices. Individuals holding a RAC show their requisite knowledge of appropriate regulations and the ability to think critically about regulatory issues and challenges that occur throughout the healthcare product lifecycle. Kristin is the first known individual to hold a RAC at MCW.



**Landon Oip, PhD,** Senior Licensing Manager in the Office of Technology Development, received the Registered Technology Transfer Professional (RTTP) designation. This required demonstrating significant accomplishments in intellectual property licensing. The knowledge that is also required for

the RTTP designation includes market and patentability assessments of biotechnology inventions, representing the IP licensing opportunities to industry, and negotiating terms and conditions of complex license agreements. The RTTP is granted by the global Alliance for Technology Transfer Professionals. Currently there are only 244 other RTTPs in the country.



**AnaKaren Manriquez Prado,** IRB Coordinator II, was selected as a staff recipient of the 2025 President's Community Engagement Award. This prestigious award honors the exceptional community engagement work of MCW faculty, staff, students and community partners or programs. This award recognizes Ana's passion and advocacy for

Community Engaged Research (CEnR) and her work to make research inclusive and accessible. She is currently the vice-chair for the Research Committee for the Latino Health Coalition and helped to gather critical feedback on a mechanism to help explain the role of the IRB to the public. She has regularly tapped into her CEnR expertise to help improve subject experience such as the new Translation service and improved consent forms.



**Ashley Zeidler,** Scholarly Communications Librarian, earned the Medical Library Association's Data Services Specialization. This program provides training in managing research data, providing guidance and instruction on data management best practices, and applying ethical data management

principles. Completing this training series demonstrates Ashley's expertise in research data management and reflects her commitment to providing high-quality support to MCW researchers.

Congratulations to the Office of Research staff members who celebrated a MCW service anniversary milestone in 2024 and were recognized in 2025. Thank you for all that you do in the Office of Research and for the research Lib mission at MCW!

**Jordan Bishop,** Biomedical Resource Center (5)

**Scott Brooks,** HRPP (5)

**Vanessa Diaquino,** HRPP (5)

**Taylor Griffith,** HRPP (5)

**Melissa Lechner,** HRPP (5)

**Alex Sherman,** MCW Engineering Core (5)

**Bijal Patel,** Research Systems (10)

**Todd Senglaub,** Radiation Safety (10)

**Linda Yang,** Research Systems (10)

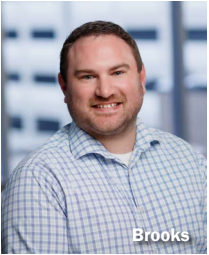
**Jen Brown,** Administration (15)

**Baohong Sun,** Biomedical Resource Center (20)

**Chini Chenfoo,** Biomedical Resource Center (20)

**Steven Reitci,** Libraries (25)

# Our People



**Scott Brooks** and **Ashley Hughes** achieved their Certified IRB Professional (CIP) designation. The CIP is a nationally recognized credential awarded by Public Responsibility in Medicine and Research (PRIM&R) showcasing expertise in human research protections and Institutional Review Board (IRB) administration. Candidates for the CIP must meet specific eligibility requirements and pass a rigorous examination demonstrating a strong commitment to ethical standards, advanced regulatory knowledge, and in-depth understanding of IRB operations.

By obtaining their CIP, Ashley and Scott have shown exceptional dedication to safeguarding the rights and welfare of research participants.



**Will Baye, MIS**, was promoted to the role of Research Systems Manager, Development, taking over leadership of the development team for Erika Krueger. In this role, Will oversees the planning, development, implementation, and evaluation of the eBridge system. He also develops system solutions to achieve strategic

goals and improve processes, taking a key role in projects such as the eBridge/Workday integration effort. Will has been with MCW for 14 years.



**Kathryn Mlsna, MLS**, was promoted to the role of Associate Director for the MCW Libraries. In this role, Kathryn oversees all front desk and circulation operations, as well as the day to day needs and management of the collection and collection budget. As a member of the Library management team since 2017, Kathryn has a high degree of experience and knowledge

of the MCW Libraries.

**Ranelle Johnston, BA**, (pictured on pg. 7) was promoted to the role of GCO Grants Supervisor, assuming leadership of one of the two new Grants Analyst teams. In this role, Ranelle manages and supports the analysts while taking on leadership of complex grants, agreements, and funding cooperatives. Ranelle brings her 8 years of experience in the Grants Office and high degree of professionalism to this leadership role.



**Whitney Treder** was promoted to the role of Grants Analyst I, Subcontract Specialist, in recognition of her taking on the significant portfolio of subcontract activity including subrecipient monitoring and subaward issuance. Whitney joined MCW in 2022 and transitioned to the Grants & Contracts Office in 2024.

Whitney brings her experience as GCO Coordinator to this important role.



**Megan Campfield** was promoted to the role of Business Analyst II in recognition of her elevated level of responsibility supporting the Research Systems unit, particularly throughout the eBridge and Workday transition. Megan has been instrumental as a liaison to project teams and the Systems team to

ensure we are tracking workflows efficiently and with accuracy. Megan joined MCW in 2013 and transitioned to the Systems team in 2021.



**Bijal Patel** was promoted to the role of Enterprise Application Developer III on the Research Systems development team. Bijal supported the transition of all Children's Wisconsin IRB protocols from IRBNet to eBridge during the Joint Venture work, and has been key to the success of the Human Subjects

Research module in eBridge. Bijal has also taken on responsibilities of patching and upgrade management, and adapting interfaces in Workday. Bijal joined MCW in 2015.

# Our People



**Linda Yang** was promoted to the role of Business Analyst V in the Research Systems unit. Linda has been key to the success of the funding module in eBridge throughout the Workday integration, leveraging her knowledge of GCO policies and procedures in analyzing the system workflows. She also supported the implementation

of the Agreements module, which has been a major efficiency gain across the board. Linda joined MCW in 2014.



**Ellie King** was promoted to the role of Business Operations Coordinator on the department's administrative team in recognition of her increasing responsibilities, oversight of operational functions, and programmatic leadership. Ellie administratively supports

department leadership, provides office management, coordinates multiple research programs and initiatives, and leads special projects and events. Ellie joined MCW in 2021 and transitioned to the Office of Research in 2023.



In January, the HRPP Office welcomed **Isabel Brandt** as an IRB Coordinator II, Reliance. Isabel comes to us with a B.A. in Cell Biology and Neuroscience from Rutgers University. She has worked at the University of Michigan, where she served as a Laboratory Manager and Technician.



In April, the HRPP Office welcomed **Maggie Guillermo** as an IRB Coordinator II for the minimal risk team. Maggie has been with the Medical College of Wisconsin for 5 years, where she has previously worked as a Clinical Research Coordinator in both the Cancer

Center and for the All of Us Research Program.



MCW Libraries welcomed **Chelsea Rowley, MLIS** as Clinical Research and Education Librarian in June. She previously worked in the Institute for Health & Humanity as a Program Coordinator. Chelsea is also a member and ally of the LGBTQ+ Employee Resource Group (EGG) at MCW. Chelsea holds a bachelor's degree from Western Michigan University and a master's in library and information science from UWM.



The Administrative team welcomed **Ben Werner** as Clinical Trials Budget Specialist II in October. Ben graduated from the University of Wisconsin-Green Bay, where he double majored in psychology and business administration. Ben is also a Certified Specialist in Psychometry (CSP) from the Board of Certified Psychometrists (BCP). He has a background in clinical trial budgets and contracts and comes to us with over 5 years of clinical experience as a neuropsychometrist.



In October, the HRPP Office welcomed **Jacki Willenborg, PhD** as an IRB Coordinator II. Jacki comes to us with a PhD in Communication and has most recently worked at the University of Washington where she was an IRB Administrator.



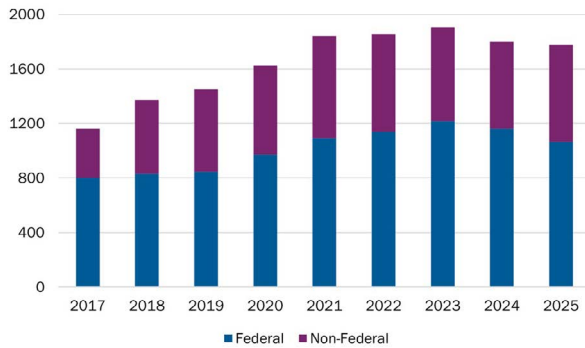
The MCW Library welcomed **Elaine Hicks, MLIS, MPH**, as Clinical Medical Librarian, Children's Wisconsin in November. Elaine has a Master of Library and Information Science, Master of Public Health, and is a Master Certified Health Education Specialist. Elaine's professional experience spans several health

sciences institutions, including serving as Director of Community and School Health Education at the Cook County Department of Public Health (Illinois), health sciences librarian roles at George Mason University and Tulane University, and as a Clinical Trials Coordinator II at LSU Health Sciences Center New Orleans.

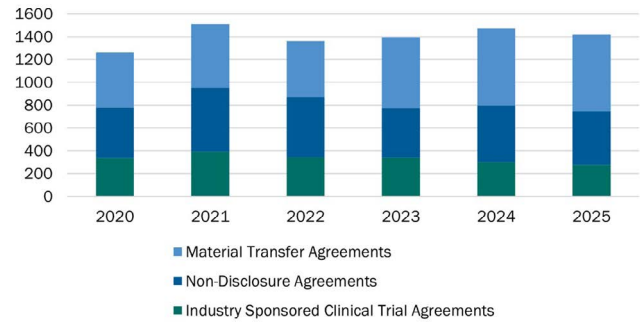
# By the Numbers

## Grants & Contracts Office Activity

Submissions to NIH



Contract Activity



The Grants & Contracts Office submitted a total of 2,047 grant applications in 2025, 1,067 of which were federal, 708 were non-federal, and 272 were internal submitted grants. The GCO supported 409 unique faculty submitting to the NIH, with 169 unique faculty receiving awards in 2025. Contract agreements stayed steady in 2025 with 673 Material Transfer Agreements, 469 Non-Disclosure Agreements, and 278 Industry Sponsored Clinical Trial Agreements.

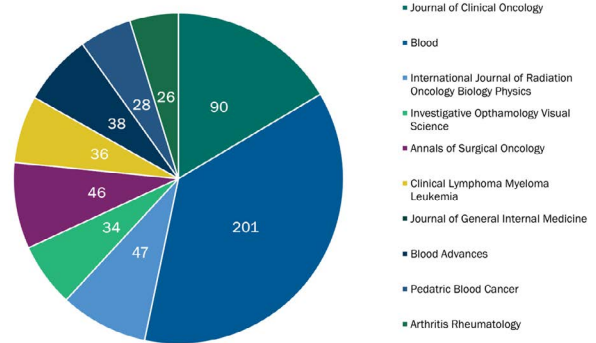
## Institutional Review Board Activity



The Institutional Review Boards expedited approval for 60% of Amendments and 68% of Continuing Progress Reports. Additionally, 200 studies, or 21% of all new studies, were eligible for FLEX review. The Reliance Team also executed 185 new reliances in 2025, 184 AMEs and 28 Reportable Events. A total of 397 reliance items were processed in 2025.

## MCW Libraries Stats

Top Journals by Number of MCW Authored Articles



The MCW Librarians staffed the Todd Wehr Library on the main MCW campus, as well as the Froedtert Library and Children's Wisconsin locations. Reference services, training, and other support have been available virtually.

### Circulation & Loans

Circulation: Physical Items	764
Circulation: Electronic Items	870,292
Inter-Library Loan Items Borrowed	2,682
Inter-Library Loan Items Lent	3,241

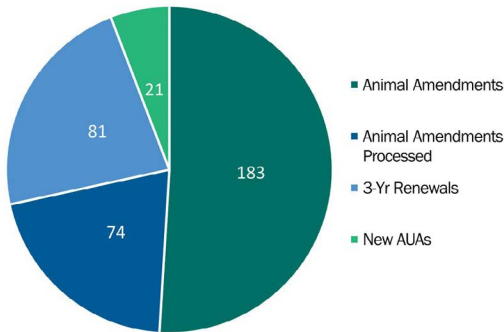
### Classes Taught

Library Guides Pageviews	125,646
Posters Printed	1,912

# By the Numbers

## Institutional Animal Care & Use Committee

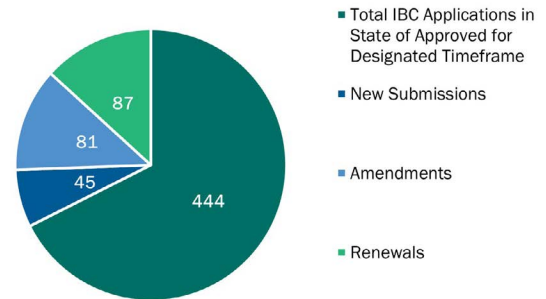
AUA Approval Activity



The IACUC Office processed 74 Animal Amendment, and approved 74 amendments. The number of 3-Year Renewals Approved increased to 81 in 2025. There were also 346 Personnel Changes, and 246 Funding Changes.

## Institutional Biosafety Committee

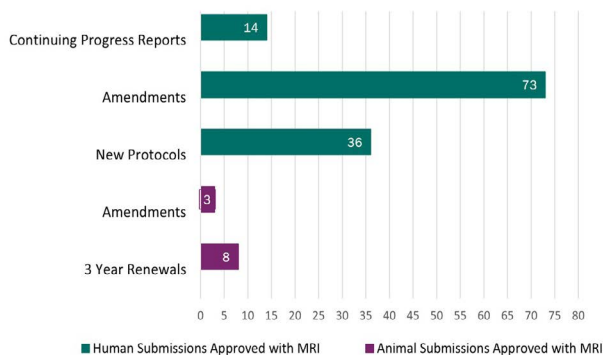
IBC Approval Activity



The Institutional Biosafety Committee kept support running smoothly for researchers in 2024. The committee saw a steady average in Amendments and Total IBC Applications in State of Approved for Designated Timeframe.

## Research MRI Safety Committee

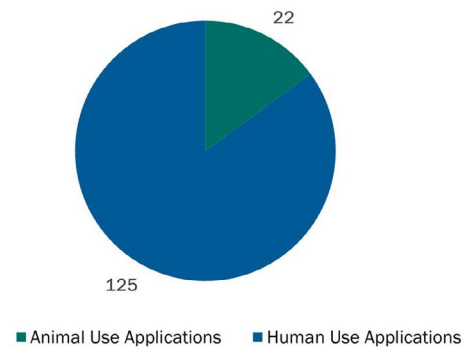
RSC Review Activity



The Research MRI Safety Committee saw an increase in amendments to Human Submissions Approved with MRI, along with Continuing Progress Reports. Animal Submissions Approved with MRI saw a steady average of amendments and renewals from previous years.

## Radiation Safety Committee

RSC Review Activity



The Radiation Safety Committee saw an increase in submissions of Human Use Applications and Animal Use Applications. In addition to facilitating submission reviews, the Radiation Safety Office assisted with a number of clinical projects utilizing radioactive material, and processed renewals for authorized users.

## Research Systems Activity

In addition to supporting the enterprise research systems eBridge, OnCore, and Payments, the Research Systems Team logged hours on several special projects in 2025. Research System projects are large development efforts. Each project takes roughly 6-9 months to develop, test and go-live. Some of these projects include instituting new rules and tracking efforts to mitigate Payments card fraud issues, and improving workflow for teams to have access to close an Exempt project without needing to notify the IRB Office. The Research Systems team also supported the transition to Workday for many systems. Work included: decommissioning Oracle integrations in eBridge and updates to person accounts and cost centers, updated Payments system and created new procedures for Workday changes, among many others.

Total eBridge Accounts	8,975
Projects Completed	31
Total Help Desk Tickets	5,417
eBridge	3,841
OnCore	1,027
Forte Payments	320
OnCore Financials	15
Calendar	214
1-on-1 Training Sessions	136

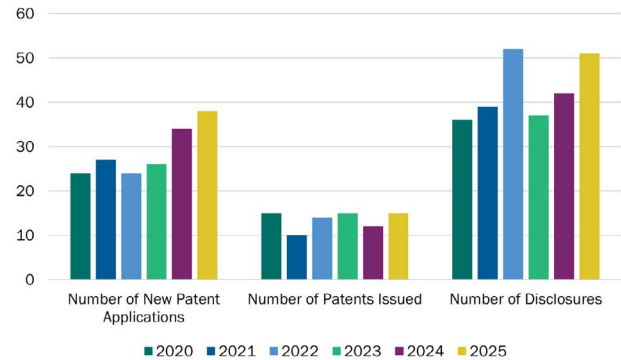
# By the Numbers

## Biomedical Resource Center Stats

Total Board Days	4,512,748
Total Annual Animal Count	34,806
Mice	30,477
Rats	4,286
Average Daily Census	12,504
Mice	10,159
Rats	2,143
Training Opportunities	740

The BRC continued steady average daily census counts of both mice and rats in 2025. The BRC support team offered 740 training opportunities for animal researchers in the year.

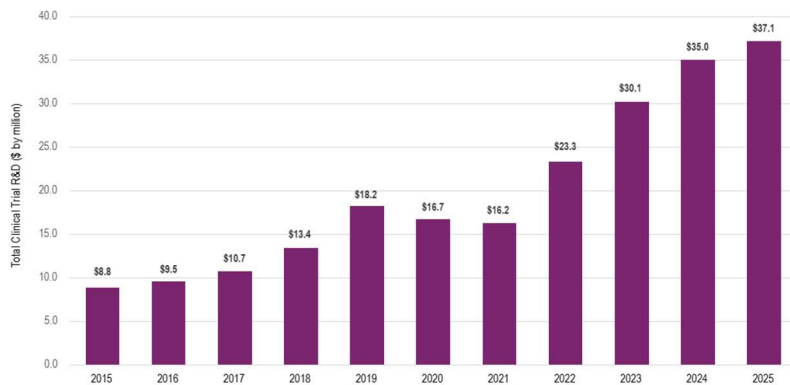
## MCW Patent and License Data: 2020 - 2025



The Office of Technology Development took in 51 invention disclosures in 2025. OTD filed 38 new patent applications and MCW inventions earned 15 issued patents, an increase in all categories for 2025.

## MCW Clinical Trials: MCW Clinical Trials Revenue

Fiscal Years 2015-2025 (July 1 - June 30)



The MCW Research Mission hit another record for clinical trials revenues: \$37.1M, a \$2.2M increase over FY25. This information is reported to the National Science Foundation's annual HERD survey. The data shows MCW's clinical trial funding from FY15 through FY25.\* As of FY24, MCW is ranked #41 in clinical trial funding, which is the in the top 20% of academic research centers reporting to the NSF. MCW's clinical trial funding has more than tripled between FY16 and FY25.

\*FY25 rankings available in late 2026.

## MCW Research Cores and iLab Activity

iLab Metrics FY2023 - 2025

Revenue and user metrics, measured by number of unique users, faculty PI investigators or departments invoiced, increased in FY25. Increased revenue trends are seen in FY23, FY24 and FY25. These increases were not only due to the additional cores added to iLab since increased revenue is also seen when analysis is restricted to core facilities that operated in all three years. During the prior three financial years (FY23-FY25) total external revenue increased from 5% to 9%. MCW Cores also supported 505 peer-reviewed grants.

iLab Metrics	FY23	FY24	FY25
PI Labs	601	595	402
Users	1,407	1,405	1,618
Requests	30,407	30,784	48,512
Cores	39	33	34
Revenue	\$4.9M	\$5.6M	\$6.2M



Published by the Office of Research  
at the Medical College of Wisconsin  
8701 W Watertown Plank Road  
Milwaukee, WI 53226

[mcw.edu/research](http://mcw.edu/research) | [research@mcw.edu](mailto:research@mcw.edu)